

104mm  
5-25mm

## DL6148

### 10W Adjustable Recessed Convex Lens Downlight

#### Description

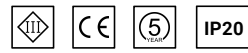
Adjustable  
Maintainable  
Low glare

#### Finish

Black/White

#### Material

Aluminium



#### TECHNICAL CHARACTERISTICS

##### Light source

Light source: Citizen COB Chip CLU703-1202E1

Output (W): 9W(250mA 36V)

Total power consumption (W): 10W

Color temperature: 2700K/3000K/4000K

CRI: ≥90

Photobiological risk: RG1

Real Lumen: 510lm

Qty Leds: 1

Lm/Real W: 51lm

Life Time: 50.000h L80B20

MacAdam steps: 3

UGR: 19

##### GEAR

This product is supplied without gear

##### Luminaire

crossing: No

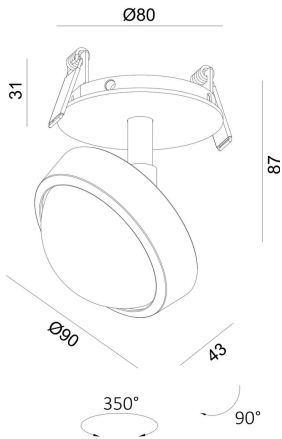
Warranty: 5 Years

#### LIGHT DISTRIBUTION for 2700K wide 68°

h(m)	E(lx)	Ø(m)
1	368.1	Ø1.34
2	92.00	Ø2.69
3	40.90	Ø4.04
4	23.00	Ø5.38
5	14.70	Ø6.72



The photograph may not match the reference exactly. Please read the product description to identify the finish.



→ 74mm  
⚡ 5-25mm

## DL6153

### 10W Adjustable Recessed Convex Lens Downlight

#### Description

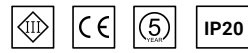
Adjustable  
Maintainable  
Low glare

#### Finish

Black/White

#### Material

Aluminium



#### TECHNICAL CHARACTERISTICS

##### Light source

Light source: Citizen COB Chip CLU703-1202E1

Output (W): 9W(250mA 36V)

Total power consumption (W): 10W

Color temperature: 2700K/3000K/4000K

CRI: ≥90

Photobiological risk: RG1

Real Lumen: 510lm

Qty Leds: 1

Lm/Real W: 51lm

Life Time: 50.000h L80B20

MacAdam steps: 3

UGR: 19

##### GEAR

This product is supplied without gear

##### Luminaire

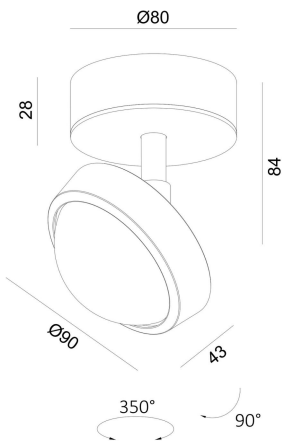
crossing: No

Warranty: 5 Years

#### LIGHT DISTRIBUTION for 2700K wide 68°

h(m)	E(lx)	Ø(m)
1	368.1	Ø1.34
2	92.00	Ø2.69
3	40.90	Ø4.04
4	23.00	Ø5.38
5	14.70	Ø6.72

The photograph may not match the reference exactly. Please read the product description to identify the finish.



# SD3311

## 10W Adjustable Convex Lens Surface Mounted Light

### Description

Adjustable  
Maintainable  
Low glare

### Finish

Black/White

### Material

Aluminium



### TECHNICAL CHARACTERISTICS

#### Light source

Light source: Citizen COB Chip CLU703-1202E1  
Output (W): 9W(250mA 36V)  
Total power consumption (W): 10W  
Color temperature: 2700K/3000K/4000K  
CRI: ≥90  
Photobiological risk: RG1  
Real Lumen: 510lm  
Qty Leds: 1  
Lm/Real W: 51lm  
Life Time: 50.000h L80B20  
MacAdam steps: 3  
UGR: 19

#### GEAR

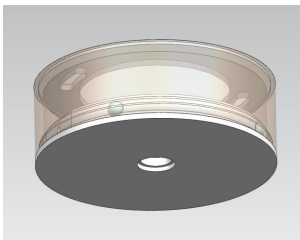
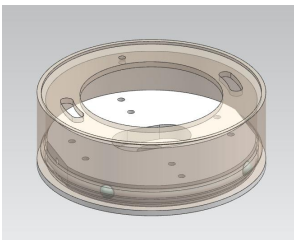
This product is supplied without gear

#### Luminaire

crossing: No  
Warranty: 5 Years

### LIGHT DISTRIBUTION for 2700K wide 68°

h(m)	E(lx)	Ø(m)
1	368.1	Ø1.34
2	92.00	Ø2.69
3	40.90	Ø4.04
4	23.00	Ø5.38
5	14.70	Ø6.72



The photograph may not match the reference exactly. Please read the product description to identify the finish.

## SD3312

### 10W Adjustable Convex Lens Surface Mounted Light

#### Description

Adjustable  
Maintainable  
Low glare  
Built-in driver

#### Finish

Black/White

#### Material

Aluminium



#### TECHNICAL CHARACTERISTICS

##### Light source

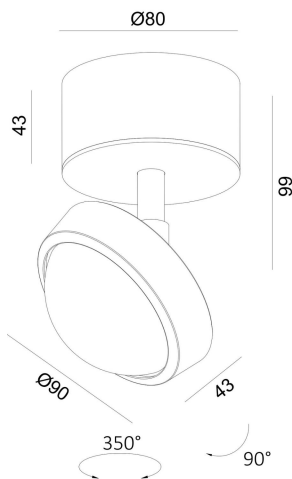
Light source: Citizen COB Chip CLU703-1202E1  
Output (W): 9W(250mA 36V)  
Total power consumption (W): 10W  
Color temperature: 2700K/3000K/4000K  
CRI:  $\geq 90$   
Photobiological risk: RG1  
Real Lumen: 510lm  
Qty Leds: 1  
Lm/Real W: 51lm  
Life Time: 50.000h L80B20  
MacAdam steps: 3  
UGR: 19

##### GEAR

This product is supplied without gear  
With Built-in ACTEC Triac Dimmable Led Driver  
RS-10-250

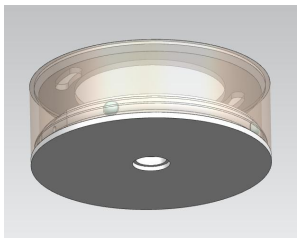
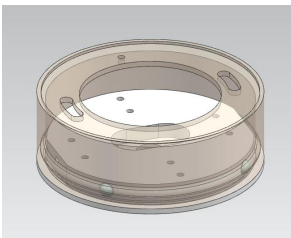
##### Luminaire

crossing: No  
Warranty: 5 Years

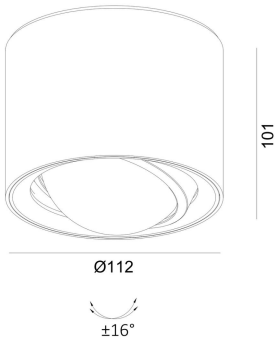


#### LIGHT DISTRIBUTION for 2700K wide 68°

h(m)	E(lx)	Ø(m)
1	368.1	Ø1.34
2	92.00	Ø2.69
3	40.90	Ø4.04
4	23.00	Ø5.38
5	14.70	Ø6.72



The photograph may not match the reference exactly. Please read the product description to identify the finish.



## SD3310

### 10W Adjustable Convex Lens Surface Mounted Light

#### Description

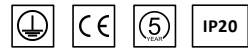
Adjustable  
Maintainable  
Low glare

#### Finish

Black/White/Silver

#### Material

Aluminium



#### TECHNICAL CHARACTERISTICS

##### Light source

Light source: Citizen COB Chip CLU703-1202E1

Output (W): 9W (250mA 36V)

Total power consumption (W): 10W

Color temperature: 2700K/3000K/4000K

CRI: 90

Photobiological risk: RG1

Real Lumen: 510lm

Qty Leds: 1

Lm/Real W: 51lm

Life Time: 50.000h L90B10

MacAdam steps: 3

UGR: 14

##### Gear

This product is supplied with gear.

With Built-in ACTEC Triac Dimmable LED Driver

RS-10-250

##### Luminaire

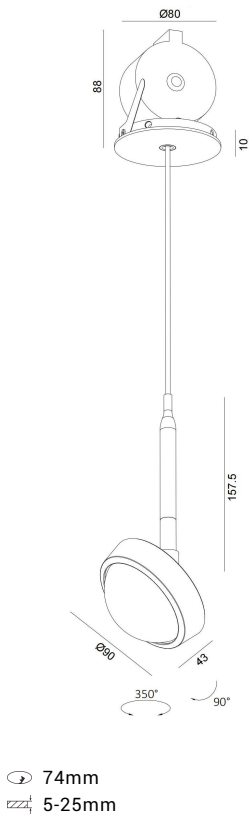
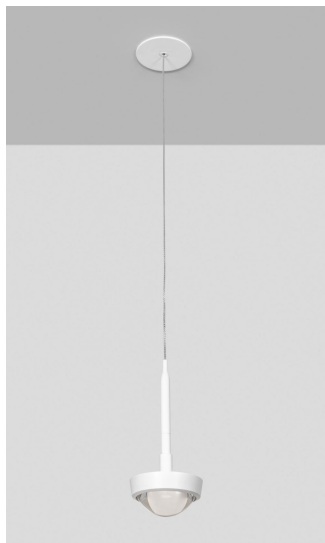
Crossing: No

Warranty: 5 Years

#### LIGHT DISTRIBUTION for 2700K wide 68°

h(m)	E(lx)	Ø(m)
1	368.1	Ø1.34
2	92.00	Ø2.69
3	40.90	Ø4.04
4	23.00	Ø5.38
5	14.70	Ø6.72

The photograph may not match the reference exactly. Please read the product description to identify the finish.



## DL6154

### 10W Recessed Convex Lens Pendant Light

#### Description

Adjustable  
Maintainable  
Low glare  
Auto-hold Suspended

#### Finish

Black/White

#### Material

Aluminium



#### TECHNICAL CHARACTERISTICS

##### Light source

Light source: Citizen COB Chip CLU703-1202E1  
Output (W): 9W(250mA 36V)  
Total power consumption (W): 10W  
Color temperature: 2700K/3000K/4000K  
CRI: ≥90  
Photobiological risk: RG1  
Real Lumen: 510lm  
Qty Leds: 1  
Lm/Real W: 51lm  
Life Time: 50.000h L80B20  
MacAdam steps: 3  
UGR: 19

##### GEAR

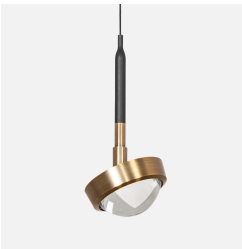
This product is supplied without gear

##### Luminaire

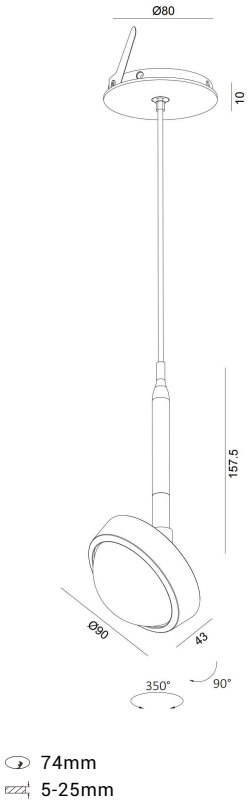
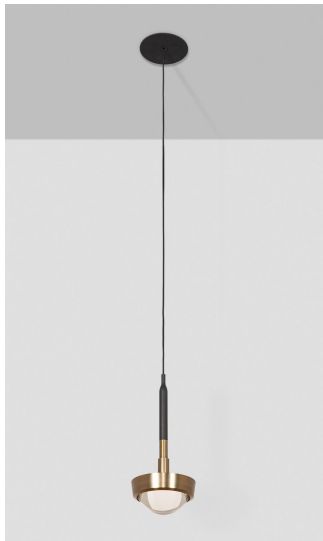
crossing: No  
Warranty: 5 Years

#### LIGHT DISTRIBUTION for 2700K wide 68°

h(m)	E(lx)	Ø(m)
1	368.1	Ø1.34
2	92.00	Ø2.69
3	40.90	Ø4.04
4	23.00	Ø5.38
5	14.70	Ø6.72



The photograph may not match the reference exactly. Please read the product description to identify the finish.



## DL6155

### 10W Recessed Convex Lens Pendant Light

#### Description

Adjustable  
Maintainable  
Low glare  
Manual Suspended

#### Finish

Black/White

#### Material

Aluminium



#### TECHNICAL CHARACTERISTICS

##### Light source

Light source: Citizen COB Chip CLU703-1202E1  
Output (W): 9W(250mA 36V)  
Total power consumption (W): 10W  
Color temperature: 2700K/3000K/4000K  
CRI: ≥90  
Photobiological risk: RG1  
Real Lumen: 510lm  
Qty Leds: 1  
Lm/Real W: 51lm  
Life Time: 50.000h L80B20  
MacAdam steps: 3  
UGR: 19

##### GEAR

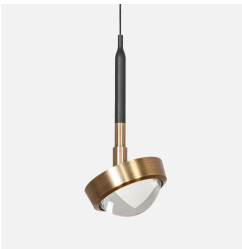
This product is supplied without gear

##### Luminaire

crossing: No  
Warranty: 5 Years

#### LIGHT DISTRIBUTION for 2700K wide 68°

h(m)	E(lx)	Ø(m)
1	368.1	Ø1.34
2	92.00	Ø2.69
3	40.90	Ø4.04
4	23.00	Ø5.38
5	14.70	Ø6.72



The photograph may not match the  
reference exactly. Please read the  
product description to identify the finish.



## PL3139

### 10W Surface Convex Lens Pendant Light

#### Description

Adjustable  
Maintainable  
Low glare  
Auto-hold Surface Mounted

#### Finish

Black/White

#### Material

Aluminium



#### TECHNICAL CHARACTERISTICS

##### Light source

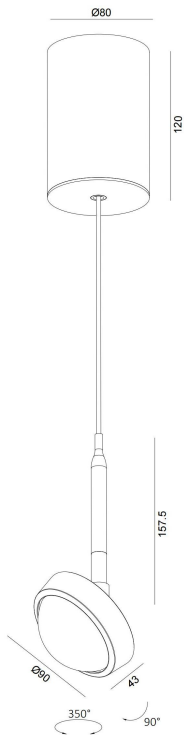
Light source: Citizen COB Chip CLU703-1202E1  
Output (W): 9W(250mA 36V)  
Total power consumption (W): 10W  
Color temperature: 2700K/3000K/4000K  
CRI:  $\geq 90$   
Photobiological risk: RG1  
Real Lumen: 510lm  
Qty Leds: 1  
Lm/Real W: 51lm  
Life Time: 50.000h L80B20  
MacAdam steps: 3  
UGR: 19

##### GEAR

This product is supplied without gear  
With auto-hold and power supply  
With Built-in ACTEC Triac Dimmable Led Driver  
RS-10-250

##### Luminaire

crossing: No  
Warranty: 5 Years



#### LIGHT DISTRIBUTION for 2700K wide 68°

h(m)	E(lx)	Ø(m)
1	368.1	Ø1.34
2	92.00	Ø2.69
3	40.90	Ø4.04
4	23.00	Ø5.38
5	14.70	Ø6.72

The photograph may not match the reference exactly. Please read the product description to identify the finish.